

The iXG Camera System

Integrated Solutions for Cultural Heritage



PHASE**ONE**

what the world's best photography is made of



iXG Camera System highlights

Color accuracy & superior detail

The iXG Camera System uses CMOS sensors in both the iXG 100MP and iXG 50MP models to ensure the highest resolution and lowest noise. These sensors produce the most accurate colors and minute details, enabling accurate reproduction for all Cultural Heritage applications. The degree of detail, quality and accuracy of color is crucial for the accurate reproduction of precious books and artworks. The iXG 100MP Achromatic model uses Sony 100MP Achromatic sensor, combining the highest possible resolution and class-leading wide spectrum sensitivity that are so desirable for specialized applications such as multi-spectral and NIR (Near Infra-Red) imaging, typically employed in research and conservation of manuscripts, paintings, maps and drawings.

Schneider Kreuznach optics

The iXG Camera utilizes integrated flat field optics with the 72mm and 120mm Schneider Kreuznach lenses, addressing the needs of flat copy work, being particularly useful for libraries, archives, and universities. In combination with the digital lens profiles of Capture One CH, the lenses offer the highest quality in terms of resolution, flatness, sharpness, lack of distortion and color uniformity required for the most demanding reproduction applications. 21mm and 42mm Extension tubes are available for close up capturing of film and small objects at higher resolution and are designed and built with the same accuracy and quality as the camera body and lenses.

Capture One CH software integration

The full integration of hardware with the customized Capture One CH software yields an efficient, professional workflow and precision results. Through the software, there is complete camera control, reliable performance and expertly crafted RAW conversion algorithms. Tools for auto-cropping and aligning of both documents and books is a huge time saver, as is the automated workflow for the scanning of negative film.

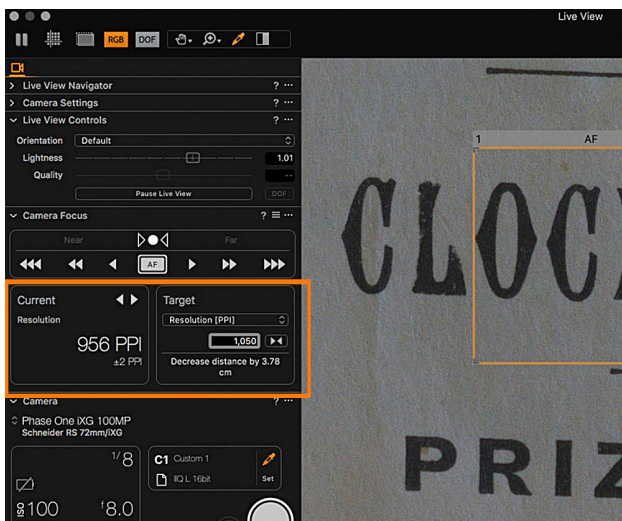
Industrial durability – one million actuations guarantee

The iXG Camera System is designed to work hard and to last. It offers industrial build quality, made with aerial-grade aluminum and the most durable mechanical and electronic components available today. The Reliance Shutter's longevity allows us to offer a guarantee of one million actuations. And with the iXG 100MP in electronic shutter mode, an unlimited number of shutter actuations can be achieved.

Scientific Tools and SDK for integration

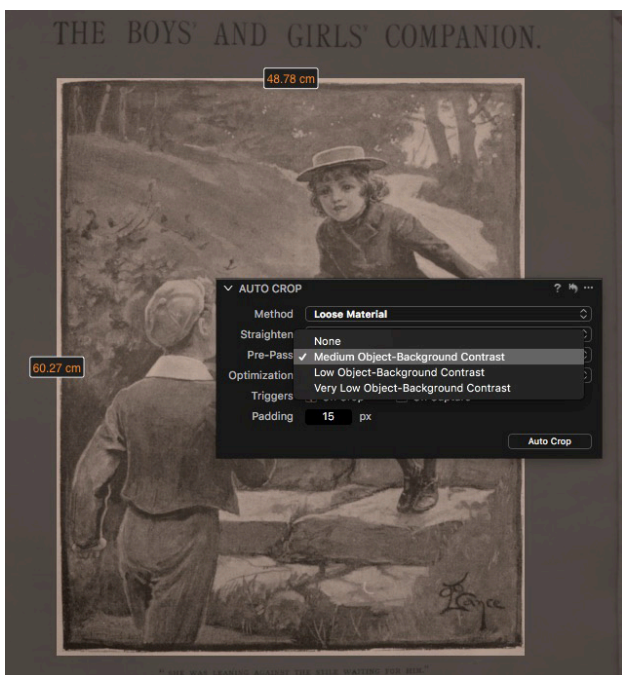
The iXG Camera System and the Capture One SDK are designed to provide an open platform for new imaging applications. For example, with the addition of accessory lighting and filtering, the wide spectrum, infrared, and multi-spectral capabilities of the iXG meet the highest standards required. These iXG capabilities and its incredible focusing accuracy opens the door to computational and sequential imaging, required for both multi-spectral and 3D applications.

Capture One CH software



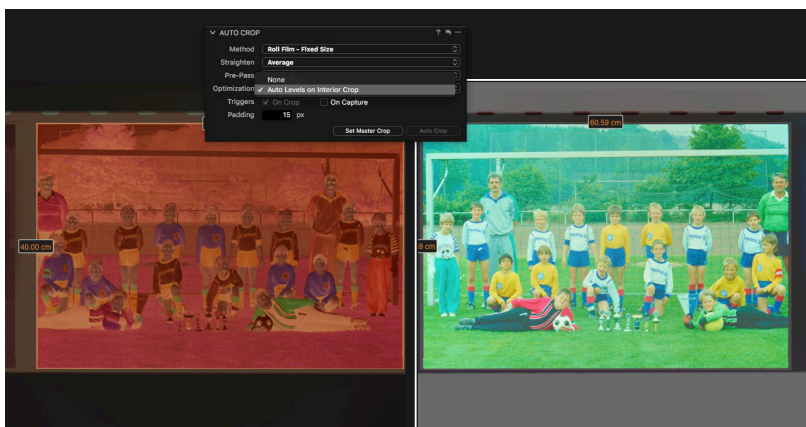
Accurate distance measuring and PPI Assist feature

The iXG's unique capability to accurately position the lens and record its properties, along with Capture One's newly designed Camera Focus Tool and its intuitive PPI Assist feature and precise contrast-based Auto Focus, provide an extremely simple, yet very powerful way to achieve the highest level of image quality as well as compliance with reproduction standards, such as Metamorfoze and FADGI. With this new capability, it is possible to use any common motorized or non-motorized copy stand. The user simply selects the target resolution, field-of-view or magnification ratio and the tool will calculate and advise the required positioning of the camera. The margin of error is within 2ppi which, at normal focusing distances, is well inside the specs from both FADGI and Metamorfoze. When combined with other tools, such as AutoCrop, the efficiency and productivity of the system increase even more - particularly when operated by less skilled personnel and when working with large batches of material in standard sizes.



The Auto Crop tool

A powerful, smart Auto Crop tool adds optional Pre-Pass settings for reflective materials, allowing detection of different object-background contrast ratios. The Auto Crop tool also adds options when capturing film strips, such as Auto Levels inside the crop. Built-in Styles can take care of all aspects of negative film conversion, including emulsion type and orientation.

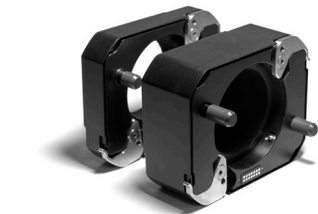


CULTURAL HERITAGE

iXG Camera System

Technical specifications

System specification



Imaging sensor options	iXG 50MP, iXG 100MP and iXG 100MP Achromatic (See specification for Digital Backs)
Lens mount	Phase One iXG
Shutter type	Leaf shutter, intergrated in lens (reliance shutter/RS shutter)
Shutter speed	1/250s - 30s
Focus positions	Close range to near infinity, 21 mm max. extension
Focus control	Motorized & encoded, controlled from Capture One CH software
Mechanical mounts	Threaded holes at top & bottom with a dedicated L-Bracket
Triggering options	Hand release, host capture from software
Flash output	Via Secured LEMO connector
Live view / HDMI	1920x1080 25p/30p, 1280 x 720 50p/60p
Data storage	USB 3.0 tethered to Capture One CH, PRO and DB
Dimensions (mm)	Focused to infinity: 150 x 120 x 100 Focused to close range: 180 x 120 x 100
Weight (g)	2300 (Including 72 mm lens and mounting bracket)
Operational temp range (c)	10-35 (office environment)
Humidity (%)	15-80 (office environment)

Lens specification



The iXG optics are designed and manufactured by Schneider-Kreuznach for the highest quality and flat field performance. The lenses are mounted with iXG-RS leaf shutters guaranteeing 1.000.000 actuations. The iXG in-camera motorized extension and the 21mm and 42mm extension tubes, provide the magnification ranges shown below.

	Schneider Kreuznach 72mm RS-iXG	Schneider Kreuznach 120mm RS-iXG
Magnification range	Infinity to 1:0.9 with extension tubes	1:6,9 to 1:1,2 with extension tubes
Lens thread diameter (mm)	40.5	46.0
Lens shade (collapsible, screw-on)	Included	Included
Field of view	62° at all apertures	48° at lower magnification & up to f11, 40° at 1:1