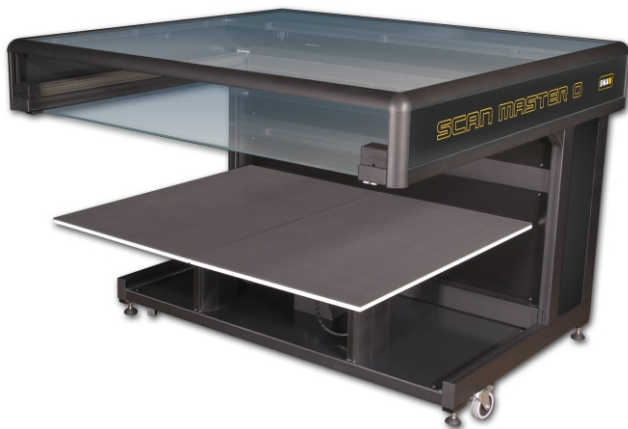


SMA

SMASCANNERS.COM



GENERATION 5
Significantly Higher
Scan Speed



SCANNER RANGE

SMA

SMASCANNERS.COM



▶ SCAN MASTER 2

Our work horse for very thick books up to A2. Ultra high optical resolution of 1200 ppi makes this scanner exceptional. If your books are thicker and you require high resolution this one is for you.



▶ SCAN MASTER 1

The only affordable A1 scanner with an optical resolution of 1200 ppi. The 35 cm pull out book cradle as a standard feature makes this rugged scanner the perfect choice for any large challenge.



▶ SCAN MASTER 0 3650

The all-in-one scanner. Books, maps, newspapers, small sheets - this scanner does it all. With its threefold book cradle this scanner is the most versatile A0 book scanner in the world.



▶ SCAN MASTER 0 4838

Our alternative in A0 book scanning. Same technology and quality as its sibling but faster than ever! Further this A0 model can be upgraded to robotic scanning.



► VERSASCAN 2550

Our smallest model - referred to as A1 PLUS - offers quite a bit more scanning range than other A1 scanners. With a scanning format of 1270 x 635 mm it is rather a cross between an A1 and A0 scanner.



► VERSASCAN 3650

This is our best seller. The VERSASCAN 3650 is known around the world for quality, performance and durability. This A0 flatbed scanner covers most scanning jobs.



► VERSASCAN 36100

The perfect choice for large challenges. With a scanning length of 2.54 meters it is the only scanner of its kind. It takes care of those kind of long originals that nobody else can scan.



► VERSASCAN 4870

Our other double A0 flatbed scanner. It is a step further from the VERSASCAN 3650 offering extra scanning range towards the width as well as the length.



SMASCANNERS.COM

A REVOLUTION IN LARGE FORMAT SCANNING

SMA proudly presents V3D - a new scanning technology which allows users to scan many different types of originals. It offers the capability of digitizing structured surfaces such as wood, rubber, plastic, fabrics, carpet and many more types of material. Finally, light reflecting items such as coins, seals and metal prints can be captured at the highest quality. The V3D technology presents new opportunities as it can be applied to materials outside the normal archive and library world.

What is V3D Scanning?

V3D stands for **VISUAL 3D**. It is a newly designed scanning technology that produces results that look like 3D. The process is based on different lighting scenarios where the same area is being captured with several different lighting angles on the fly. The software then combines the separate images into one image. As a result V3D images offer perfect reproductions of nearly any structured surface. In addition it increases the depth of field significantly. This approach is unique and raises the outstanding image quality of SMA scanners to another level. The V3D function can be disabled and regular 2D scanning can be performed.

Absolutely Unique

SMA is the only company in the world that offers a full line of large format flatbed scanners varying from A1+ to double A0+ as well as a line of manual and robotic book scanners. All flatbed scanners are suitable for scanning large and fragile originals that do not require a book cradle or cannot be handled by a feeder. Due to its newly designed roll-away mount it is easy to move the scanners around - regardless of their size. Simply unlock the flatbed scanner, fold it up and off you go. Alternatively a motorized height adjustment is available in order to accommodate different working positions. The book scanners are designed to handle large and thick books with a pressure sensor controlling the book cradle. All SMA scanners offer the highest possible optical resolution in the market - in particular in large sizes such as A0 and above.

Total Convenience

Operating SMA flatbed scanners is as easy as operating a photo copier. Open the lid, place the document, close the lid and hit the scan button - that's it! Alternatively the scanner can conveniently be operated via foot switch. Same applies for our book scanners. Simply place the book and hit the scan button. The rest of the process is fully automatic. All the operator has to do is to flip the page and release the scan. All SMA scanners are equipped with a special LED light illuminator that does not produce any ultraviolet or infrared radiation. Harmless and uniform illumination is guaranteed. The illuminator of all SMA scanners is located inside the scan head and is simply moved across the original. As a result all SMA scanners can be operated independent from ambient light and do not irritate the operator's eyes.

Significantly Higher Scan Speed

SMA scanners were designed for applications where speed is an issue. The utilized scanning and interface technology guarantees the highest possible productivity. Further, the capability of scanning bidirectionally cuts the mechanical impact in half and increases the productivity further. It doesn't get any faster than that! With the new release of our GENERATION 5 scanners the scan speed has increased its performance by 100% so our scanners are now twice as fast! For more details please refer to the technical specifications in this brochure.

Quality Made in Germany

Our line of scanners is equipped with an unique scan engine Made in Germany. It provides high quality images based on state of the art technology. Bitonal, grey scale or color images can be produced with a resolution of up to 1200 ppi. All our scanners achieve a very high geometrical accuracy which makes them ideal for usage in the GIS, cartography and land survey environment.

More SMA Products

For long-term preservation SMA offers an extensive line of Archive Writers along with microfilm processors as well as micrographic consumables.



SMASCANNERS.COM

BSW - BATCH SCAN WIZARD

Simplify High Volume Scanning

Batch Scan Wizard is a fast and easy to use software solution from Image Access for professional management of large scanning volumes and jobs. The software increases data throughput and reduces operational tasks substantially. Batch Scan Wizard is ideal for processing large volume scanning jobs but is just as useful for smaller volumes in which more advanced operations like page splitting or extracting specific areas on a document is required.

The operator creates a job and configures a template for the job. Then, all images scanned are collected in the job until the job is closed by the operator. In addition to the standard scan parameters like brightness, contrast, color mode or file format Batch Scan Wizard lets operators predefine specific areas of a document to extract, scan and save as separate images. Nothing is lost, because you can reopen a stored scan job and change it with the features cut, delete, insert and replace for any selected image in the job. You can also change the filename or directory location of the job.

Batch Scan Wizard supports all Scan2Net® scanners and their functions. Using Batch Scan Wizard's rescan function, a previously scanned image is held in memory. Color mode, file format, rotation, mirror and camera settings can be modified without having to rescan. The new settings will affect the image immediately, without having to physically rescan the document. When you have optimized your scan parameters, you can save the new images or replace an image in your batch.

The new, freely configurable workflow tracking in Batch Scan Wizard supports you with information about your files in each scanning job. This record includes date and time for each image scanned, the scanning parameters used, the PC used and the location of your images.

Batch Scan wizard scan job indexing will help with the compilation of individual variables and/or combinations of variables for the automatic creation of file and directory names and their directory structures.

Batch Scan Wizard Functions:

- Create custom templates for specific scanning parameters, file naming conventions and directory locations
- Automatic generation of file and directory names and directory structures using individual or combinations of variables
- Freely configurable file, directory, and scan template names (via manual input, barcode or using variables)
- Configurable keyboard shortcuts to optimize processing speed
- Supports all Scan2Net® functions as well as page splitting, page region extractions, zoom, rotate, invert and mirror
- Interface allows operators to select a variable number of image windows
- Individual image scaling horizontally, vertically or adapted to the window size
- Cut, delete, replace and insert a selected image into a previously generated job
- Multiprocessor and hyperthreading support
- Indexing scan jobs
- Keyboard shortcuts, file menu and mouse context menus
- File format output: Multipage PDF (PDF/A) und TIFF, JPEG, JPEG 2000, PNM, PNG, BMP, TIFF (Raw, G3, G4, LZW, JPEG), AutoCAD DWF, JBIG, DjVu, DICOM, PCX, Postscript, EPS, Raw data
- Image enhancement features such as cropping, masking, desewing, brightness, contrast, gamma, despeckle
- Threshold can be set to fixed or dynamic
- Integrated full-screen display

Perfect Stitch - The Easiest Way to Make One Out of Two!

The PerfectStitch software is the easiest, most intuitive solution for fast and accurate stitching of two JPEG or TIFF images.

Using the high quality images generated by SMA scanners, you can achieve a perfect stitching result in three simple steps. Double the scan area of your scanner with PerfectStitch!

Batch Scan Wizard



SMASCANNERS.COM

TECHNICAL SPECIFICATIONS & OPTIONS

	SCAN MASTER 2	SCAN MASTER 1	SCAN MASTER 0 <small>3650</small>	SCAN MASTER 0 <small>4838</small>
Scanning Range	635 x 508 mm (25 x 20 inch)	915 x 635 mm (36 x 25 inch)	1270 x 915 mm (50 x 36 inch)	1219 x 965 mm (48 x 38 inch)
Maximum Resolution	1200 ppi	1200 ppi	1200 ppi	1200 ppi
Scan Speed (full range)	300 ppi color: 3 seconds 600 ppi color: 3 seconds	300 ppi color: 4 seconds 600 ppi color: 4 seconds	300 ppi color: 8 seconds 600 ppi color: 8 seconds	300 ppi color: 6 seconds 600 ppi color: 6 seconds
Camera System	Sealed & dust-proof	Sealed & dust-proof	Sealed & dust-proof	Sealed & dust-proof
Light Source	White LEDs, classified IEC 60825-1: class 1 IR and UV free	White LEDs, classified IEC 60825-1: class 1 IR and UV free	White LEDs, classified IEC 60825-1: class 1 IR and UV free	White LEDs, classified IEC 60825-1: class 1 IR and UV free
Color Depth	Color 48/24 bit Color 48/8 bit, Greyscale16/8 bit	Color 48/24 bit Color 48/8 bit, Greyscale16/8 bit	Color 48/24 bit Color 48/8 bit, Greyscale16/8 bit	Color 48/24 bit Color 48/8 bit, Greyscale16/8 bit
Interface	GBit Network	GBit Network	GBit Network	GBit Network
Operating Systems	Windows 7/8/10 x64	Windows 7/8/10 x64	Windows 7/8/10 x64	Windows 7/8/10 x64
Included Software	Batch Scan Wizard Other Software optional available	Batch Scan Wizard Other Software optional available	Batch Scan Wizard Other Software optional available	Batch Scan Wizard Other Software optional available
Standard Book Cradle	35 cm pull-out motorized	35 cm pull-out motorized	35 cm pull-out motorized	35 cm pull-out motorized
Optional Book Cradle	50 cm pull-out motorized	50 cm pull-out motorized	50 cm pull-out motorized	50 cm pull-out motorized
Other Options	TV stand for large format monitor Scanning transparencies V-scanning Vacuum Table Robotic scanning	TV stand for large format monitor Scanning transparencies V-scanning Vacuum Table Robotic scanning	TV stand for large format monitor Scanning transparencies V-scanning Vacuum Table Robotic scanning	TV stand for large format monitor Scanning transparencies V-scanning Vacuum Table Robotic scanning
Ambient Conditions	Temperature +5 to +40C Humidity 20 to 80% (non-condensed)	Temperature +5 to +40C Humidity 20 to 80% (non-condensed)	Temperature +5 to +40C Humidity 20 to 80% (non-condensed)	Temperature +5 to +40C Humidity 20 to 80% (non-condensed)
Dimensions & Weight	W: 83cm D: 83 cm H: 104 cm 70 kg (without PC and Monitor)	W: 118 cm D: 104 cm H: 104 cm 110 kg (without PC and Monitor)	W: 168 cm D: 120 cm H: 104 cm 150 kg (without PC and Monitor)	W: 149 cm D: 143 cm H: 107 cm 130 kg (without PC and Monitor)



SMASCANNERS.COM

TECHNICAL SPECIFICATIONS & OPTIONS

	VERSASCAN 2550	VERSASCAN 3650	VERSASCAN 36100	VERSASCAN 4870
Scanning Range	1270 x 635 mm (50 x 25 inch)	1270 x 915 mm (50 x 36 inch)	2540 x 915 mm (100 x 36 inch)	1778 x 1219 mm (70 x 48 inch)
Maximum Resolution	1200 ppi	1200 ppi	1200 ppi	1200 ppi
Scan Speed (full range)	300 ppi color: 8 seconds 600 ppi color: 8 seconds	300 ppi color: 8 seconds 600 ppi color: 8 seconds	300 ppi color: 16 seconds 600 ppi color: 16 seconds	300 ppi color: 11 seconds 600 ppi color: 11 seconds
Camera System	Sealed & dust-proof	Sealed & dust-proof	Sealed & dust-proof	Sealed & dust-proof
Light Source	White LEDs, classified IEC 60825-1: class 1 IR and UV free	White LEDs, classified IEC 60825-1: class 1 IR and UV free	White LEDs, classified IEC 60825-1: class 1 IR and UV free	White LEDs, classified IEC 60825-1: class 1 IR and UV free
Color Depth	Color 48/24 bit Color 48/8 bit, Greyscale 16/8 bit	Color 48/24 bit Color 48/8 bit, Greyscale 16/8 bit	Color 48/24 bit Color 48/8 bit, Greyscale 16/8 bit	Color 48/24 bit Color 48/8 bit, Greyscale 16/8 bit
Interface	GBit Network	GBit Network	GBit Network	GBit Network
Operating Systems	Windows 7/8/10 x64	Windows 7/8/10 x64	Windows 7/8/10 x64	Windows 7/8/10 x64
Included Software	Batch Scan Wizard	Batch Scan Wizard	Batch Scan Wizard	Batch Scan Wizard
	Other Software optional available	Other Software optional available	Other Software optional available	Other Software optional available
Mount Assemblies	Roll away mount with fold up function included	Roll away mount with fold up function included	Roll away mount with fold up function included	Roll away mount with fold up function included
Options	Motorized height adjustment TV stand for large format monitor Lid with white coating for transparent originals	Motorized height adjustment TV stand for large format monitor Lid with white coating for transparent originals	Motorized height adjustment TV stand for large format monitor Lid with white coating for transparent originals	Motorized height adjustment TV stand for large format monitor Lid with white coating for transparent originals
Ambient Conditions	+5 to +40C Humidity 20 to 80% (non-condensed)	+5 to +40C Humidity 20 to 80% (non-condensed)	+5 to +40C Humidity 20 to 80% (non-condensed)	+5 to +40C Humidity 20 to 80% (non-condensed)
Dimensions & Weight	W: 180cm D: 86 cm H: 95 cm 75 kg (without PC and Monitor)	W: 180 cm D: 120 cm H: 95 cm 110 kg (without PC and Monitor)	W: 305 cm D: 120 cm H: 100 cm 150 kg (without PC and Monitor)	W: 228 cm D: 152 cm H: 104 cm 130 kg (without PC and Monitor)

SMA 

SMASCANNERS.COM

BLACK & YELLOW

SMA Electronic Document GmbH
Södeler Weg 2
61200 Wölfersheim
Germany

Phone: +49 6036 9893010

Fax: +49 6036 9893020